

National Design and Access Guidance

National Design Guidance that has been taken into account during the design process includes:

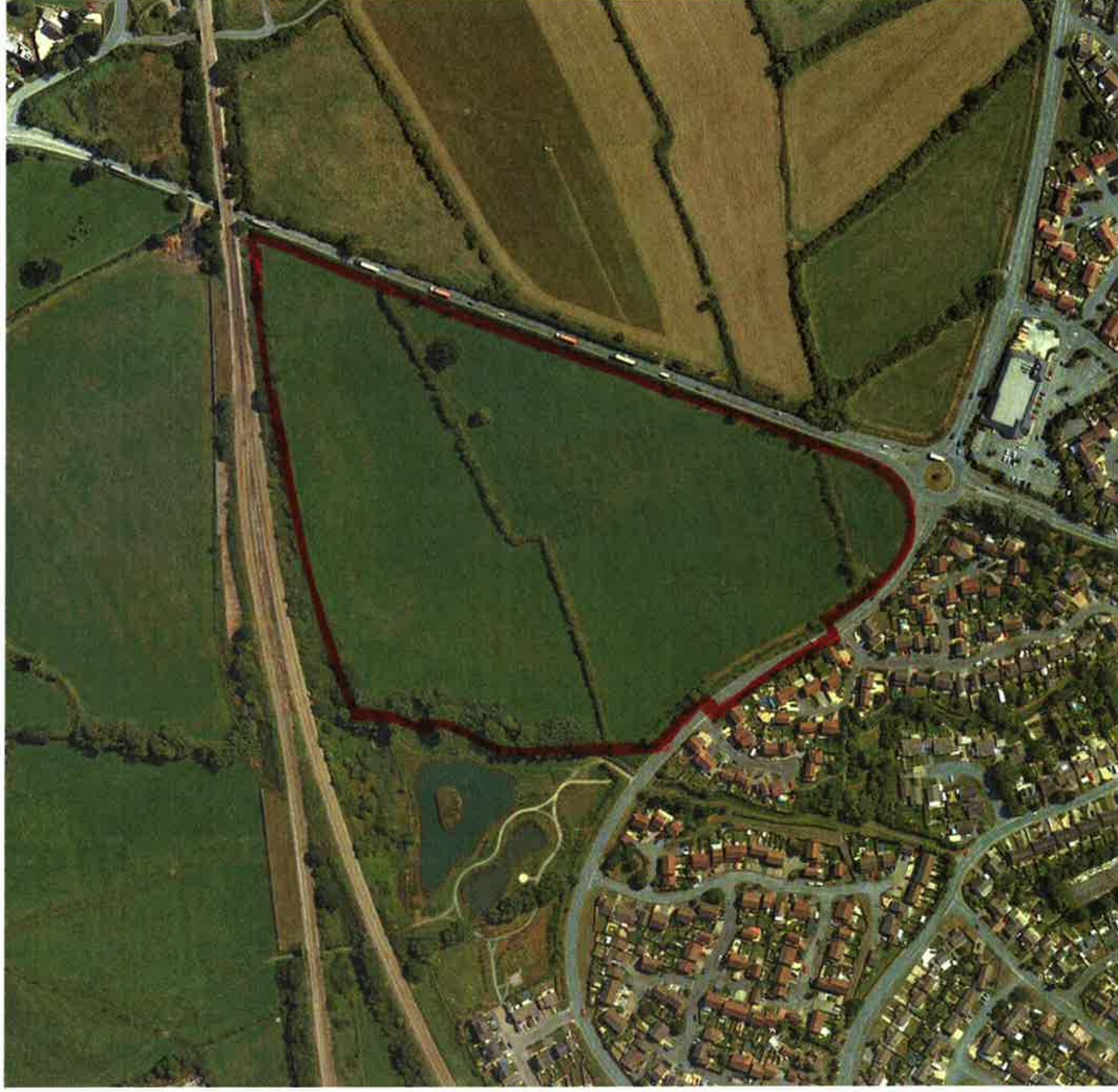
- Design and Access Statements - How to write, read and use them (CABE, 2007);
- Manual for Streets 1 and 2 (English Partnerships and the Housing Corporation, 2000 and 2007); and
- Design for Accessibility – Inclusive Environments (RIBA Enterprises, 2004).

The Application Process

The design proposals for the site have evolved as a result of technical work and discussions with key stakeholders, including the local authority. Dialogue with the Town Council, the Westbury Area Board, statutory bodies and the local community have also informed the plans.

Aside from site access, the proposals set out in this outline planning application are illustrative but aim to provide a structure for the key components of the scheme.

There will be a further opportunity for consultation on this outline application following grant of consent. The chosen developers of the site would submit reserved matters applications for approval to the Local Planning Authority. There would then be opportunity for public consultation on the final detailed designs.



Right: Aerial view of the site.